



Your Lumberyard Storage Experts

## Product Catalog



**Cantilever Systems**

**Pre-Engineered Buildings**

**Drive-Thru Canopies**

**Auto-Stak Systems**

**Bulk Storage Sheds**

**Engineering & Design**

[www.krauterautostak.com](http://www.krauterautostak.com)



# Krauter Auto-Stak



## What We Do

Krauter Auto-Stak designs, engineers, manufactures and installs rack storage systems, pre-engineered metal buildings and bulk storage sheds for the lumber and building material industries.

## Capabilities

The experts at Krauter Auto-Stak have vast experience in the design and construction of lumber and material handling systems. Systems designed to solve your storage needs today yet flexible enough to satisfy any future plans. Their team of knowledgeable professionals has become the industry leader by ensuring every storage system is as efficient, reliable and affordable as possible.





# Design - Engineer - Manufacture - Install



## Table of Contents

Krauter Auto-Stak Mission Statement .....	1
Auto-Stak Single Sided System .....	3
Auto-Stak Double Sided Systems .....	4
Drive-Thru Auto-Stak System .....	5
Auto-Stak for Sheet Goods .....	6
Auto-Stak for Composite Lumber, PVC Trim Boards, MDF Moulding, Cement Board Siding .....	7,8
Auto-Stak for Vinyl Siding .....	9
Auto-Stak Advantages .....	10
Drive-Thru Systems and Canopies .....	11,12
Cantilever T-Sheds .....	13
Cantilever L-Sheds .....	14
Cantilever Racking Systems .....	15
Metal Buildings and Bulk Storage Systems .....	16
A-frame Vertical Storage Racks .....	17
Manual Board Bins .....	18
Pallet Racking .....	19
Door and Window Racks .....	20
Portable Stacking Racks .....	21
Garden Centers and Mezzanines .....	22



# Auto-Stak Single Sided System

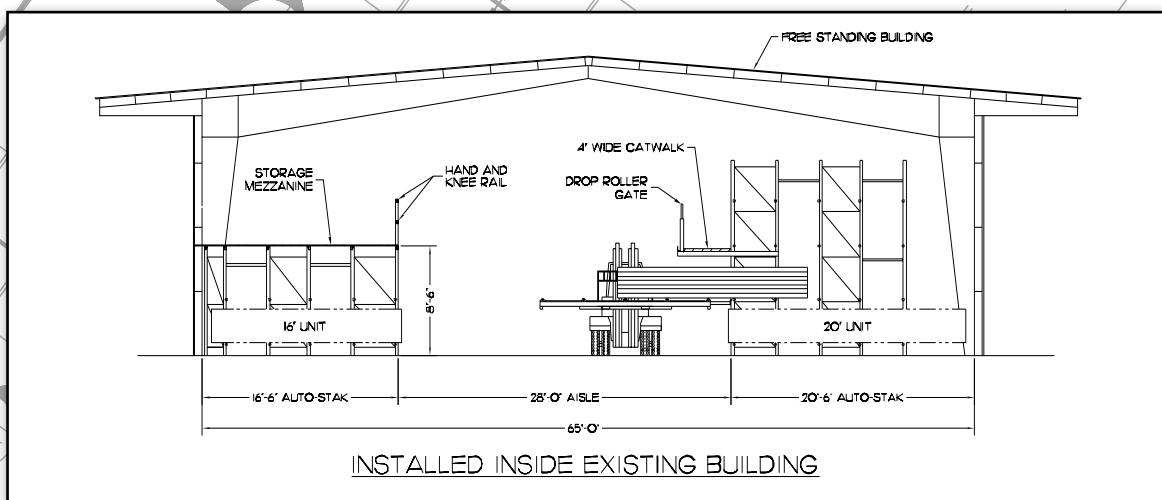
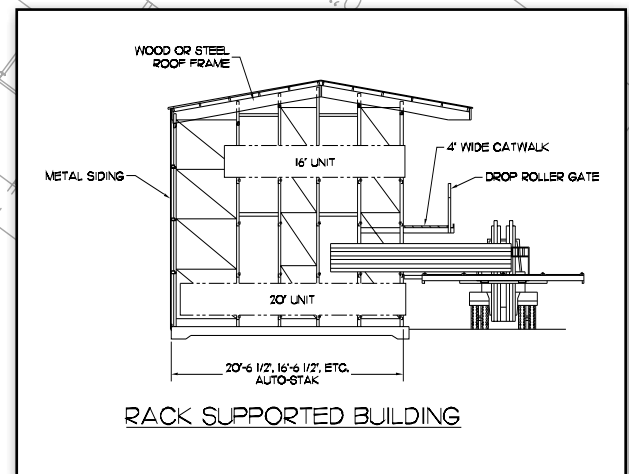


**Rack-supported Single Sided System**

- Building materials are loaded and picked from one side
- Can be designed as a new rack-supported building or installed into existing buildings and sheds
- The best system for picking orders, material is always up front and easy to reach
- It's safe. Material is contained and cannot fall out, no leaning-in or climbing on rack to pick orders



**Auto-Stak Inside Existing Building**





# Auto-Stak Double Sided System



**Rack-supported Double Sided System**

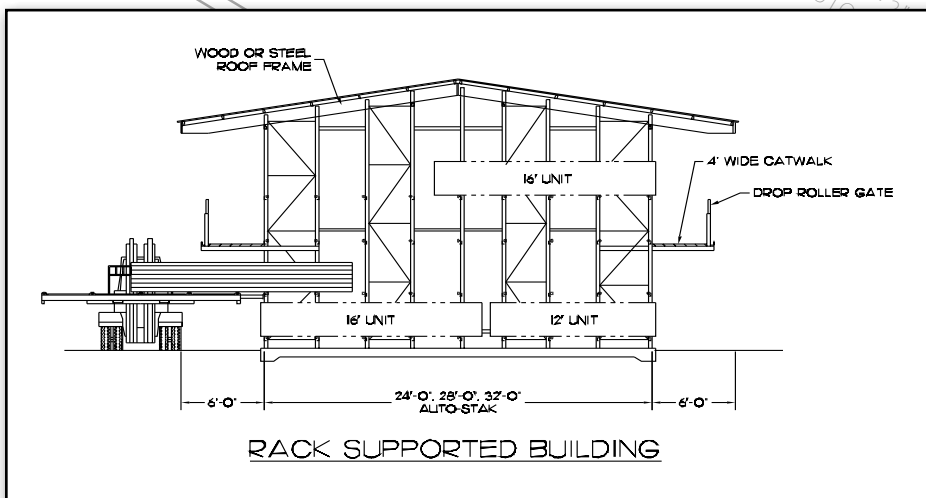
- For rack-supported buildings, end-loading provides the best protection from the elements
- Hand pick all bin levels
- Auto-Stak System uses less than 1/2 the space vs. cantilever racking
- All bins equipped with a 3" beam for product labeling



**Automated Bin Loading System**

## Auto-Stak Advantages

- Automatically end-loads a unit in less than one minute
- Uses half the space of traditional cantilever rack
- Most cost-efficient storage system available
- Catwalk and Mezzanine systems increase storage area for more capacity



**Loads in less than one minute**



# Auto-Stak Drive Thru System



**Center Lane Drive-Thru Auto-stak System**

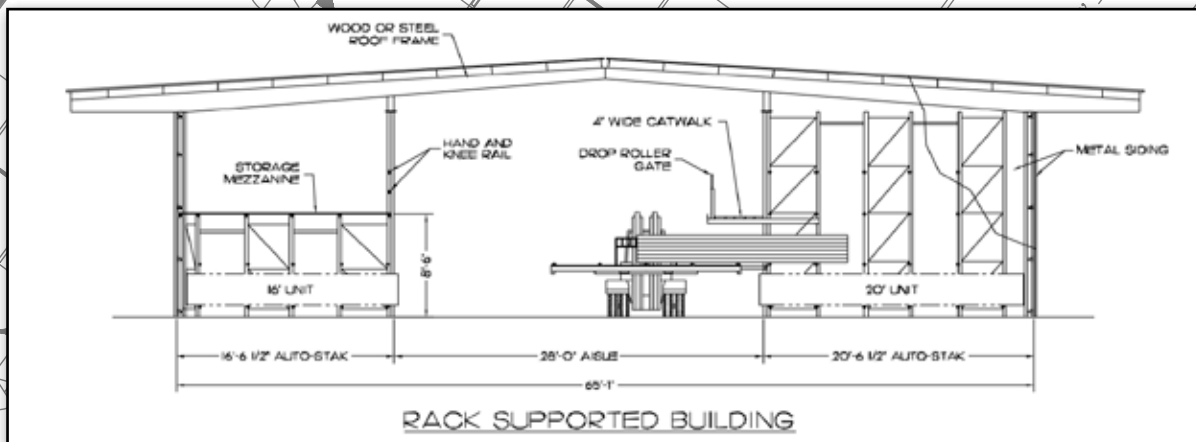
- Can be designed as a totally enclosed rack-supported building
- Provides complete security and protection from the elements
- System layout is based on products and site
- Other racking can be incorporated into the building design
- Efficiently allows you to store all building materials into one building



**Floor-to-Ceiling High Density Storage**



**Interior Drive-Thru Auto-Stak Racking with Mezzanine above**





# Auto-Stak for Sheet Goods

- Auto-Stak's end-loading doubles your storage capacity compared to side-loaded racks
- Easier to pick materials from the end
- All bins equipped with a 3" beam for product labeling
- Can incorporate hand-load bins for small quantity products
- Accommodates back stock storage as well



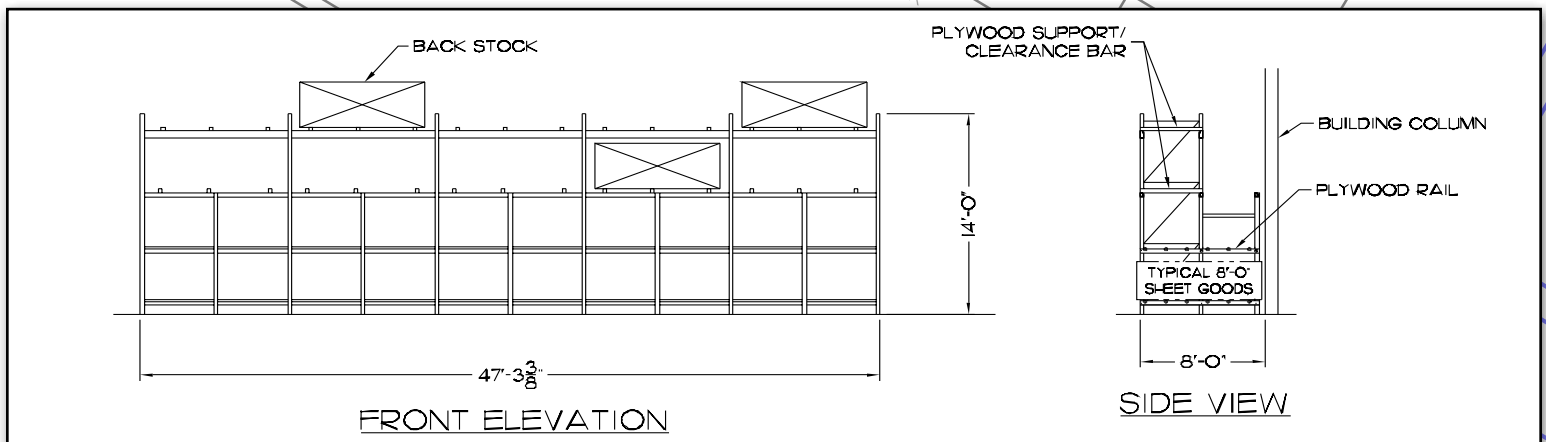
Sheet Goods Loading



Auto-Stak Bins with Back stock above



Full-size Auto-Stak Roller Bins with adjustable Hand-load Bins





# The Auto-Stak System



**Single Sided Auto-Stak System for Composite Lumber**

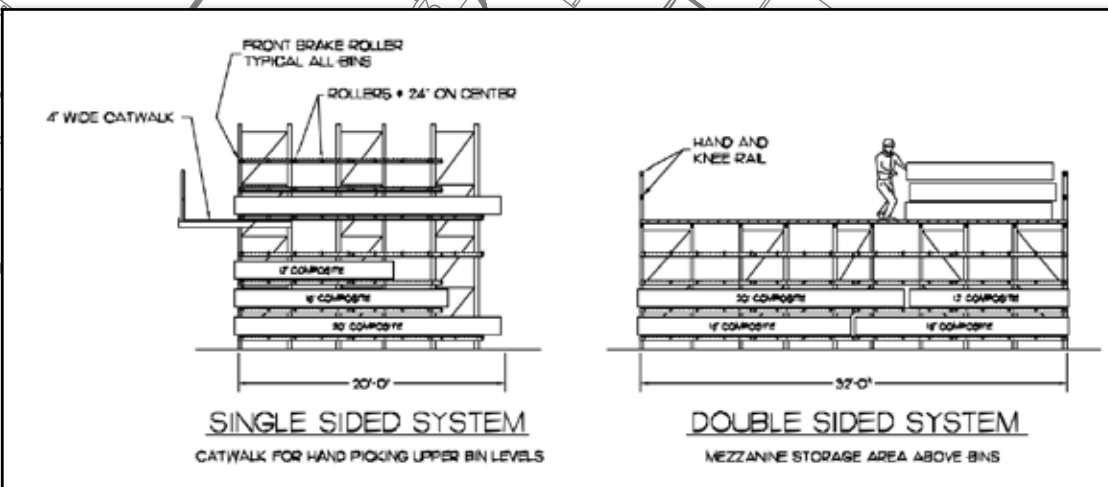
- Composite Lumber
- PVC Trim Boards
- MDF Moulding
- Cement Board Siding
- Any materials with excessive deflection



**Automatically Load a Unit in 1 Minute**



**PVC Trim Boards**



- Systems can be single-sided or double-sided, installed into existing buildings or designed as a new rack-supported building
- Rollers at 24" on center eliminate the need for expensive slave pallets
- Bins have vertical adjustability on 2" increments



## High-Density Storage

- Auto-Stak is the best system for picking orders
- Material is always up front and easy to reach
- Auto-Stak uses less than half the space vs. cantilever rack
- All bins equipped with 3" beam for product labeling
- Easy to display and organize your product
- Auto-Stak runs of any length are available



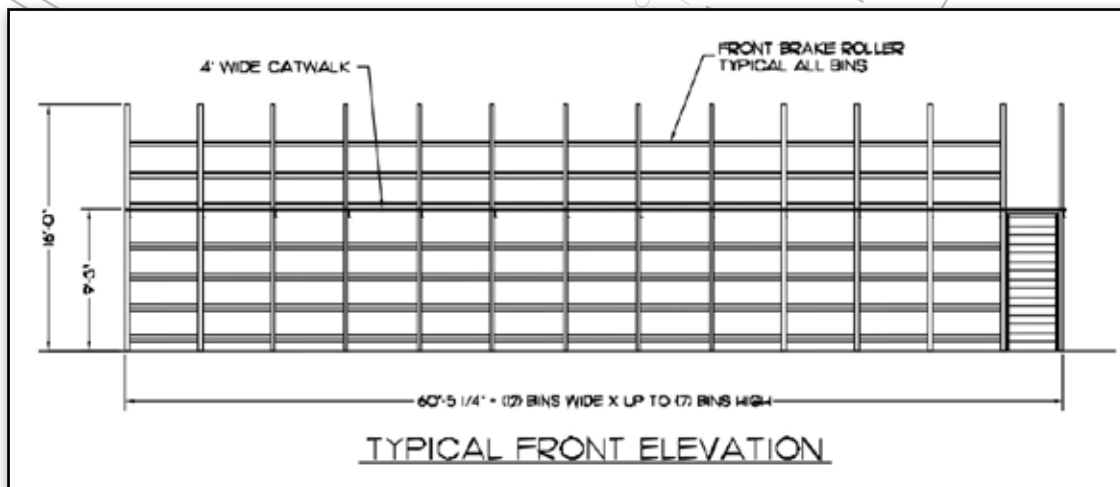
Single Sided Auto-stak System for MDF Moulding



Rollers on 24" Centers to prevent Deflection



Cement Board Siding





# Auto-Stak for Vinyl Siding



**Pick Orders Directly from Rack**

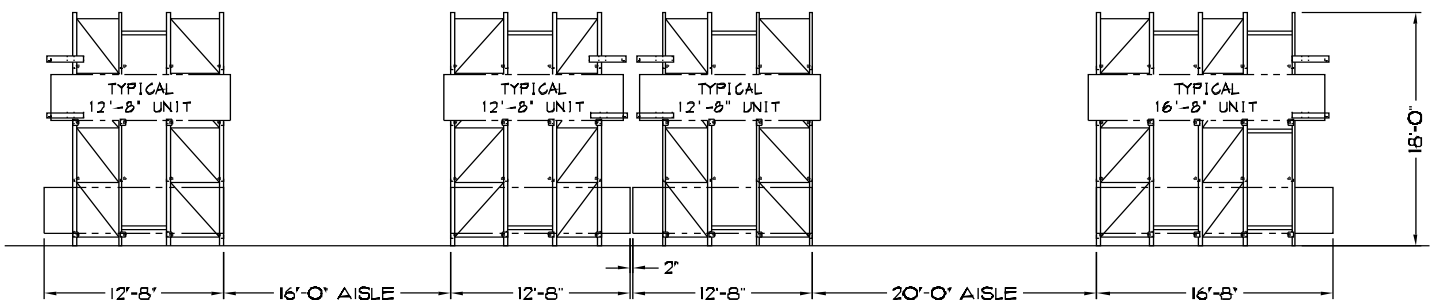
- Auto-Stak will double your storage capacity compared to side-loaded racks
- Auto-Stak will increase your pick rate by 35% - no need to remove pallets to pick orders, and it's easier to pick boxes directly from rack
- Seeing the end of the bundles enables you to take inventory in 1/3 of the time
- Automatically load and unload back stock above



**Auto-Stak with Catwalk**



**3" Beams for Product Labeling**



**TYPICAL CROSS SECTION**



# Auto-Stak Advantages

- Automatically end-load a unit in less than one minute
- Uses half the space of traditional cantilever rack
- Most cost-efficient storage system available
- East to pick orders, materials are always up front
- It's safe. Materials are contained as well as stored



Auto-Stak for Door Slabs



Roller Unlocked



Roller Locked



# Drive-Thru Systems & Canopies



**Enclosed Double Drive-Thru**

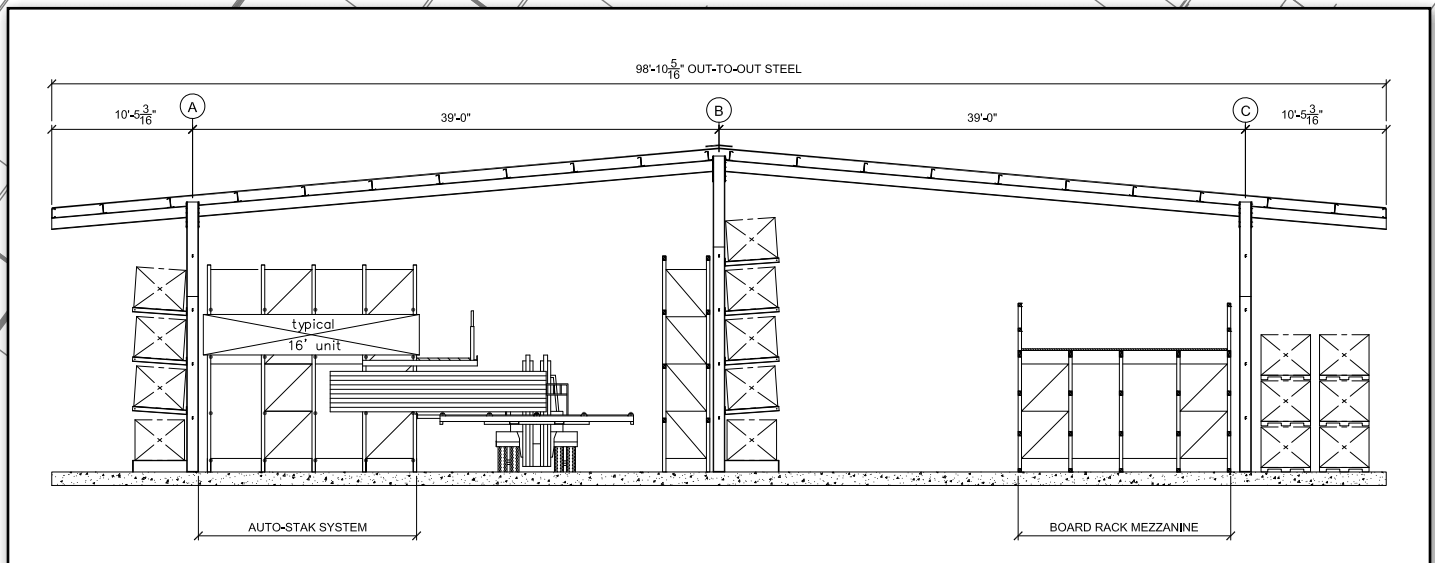


**Drive-Thru Interior Racking**



**Single Drive-Thru Canopy**

- Versatile system allows you to incorporate or integrate Auto-Stak Systems, Mezzanines, Pallet Racking and Cantilever Racking
- Open systems, enclosed systems or a combination of both are available
- Custom facades and siding options available
- All buildings are comprehensively designed and engineered
- Brighten the interior with standard or melt-out skylights
- Engineer stamped drawings for buildings and foundations supplied nationwide



**Cantilever Drive-Thru with Auto-Stak System**





**Open Cantilever Drive-Thru with Three Aisles**



**Open Cantilever Canopy**



**Drive-Thru with Auto-Stak System and Pallet Racking**



**Enclosed Drive-thru with Composite Siding**



# Cantilever T-Shed Systems



**Cantilever T-Shed with four Storage Levels**

- Canopies span up to 31'
- Provides excellent storage volume and efficient use of space
- Available in almost any arm configuration and column height
- Easy to store and pick materials
- Engineer stamped drawings and installations nationwide

## Retrofit Projects

- Able to retrofit new and most existing cantilever racking
- Great option if you want racking now and cover in the future
- Trusses and Canopies tailored to meet your storage needs



**Retrofitted Canopy**





# Cantilever L-Shed Systems

DWG  
- S4  
AILS



**Cantilever L-Shed**

- Krauter Auto-Stak L-Sheds offer excellent storage for long length lumber products
- Perfect for framing property lines or built against existing structures
- Trusses tailored to your needs to keep the weather and elements at bay
- Easy to display and organize your product



**L-Shed against Existing Building**



**L-Shed with End walls**



**Engineered Lumber Products**



# Cantilever Racking Systems



**Single Face Cantilever within Drive-Thru Building**

- The most popular storage system utilized in lumberyards today
- Available in any configuration, size and color: Each project is unique to the customers' needs
- Single Face and Double Face Cantilever available
- Free-standing or integrated into a rack-supported building
- Arms have vertical adjustability on 4" increments



**Structural Steel Racking**



**Free Standing Double Face Cantilever**

## Cantilever Racking Accessories

- End Caps: Highlight, cover and protect Cantilever arms
- End Stops: Secures product in-place on Cantilever arms
- Stacking Frames: Provide rigid surface for storing products with more deflection



**End Caps**



**Stacking Frames**



**End Stops**



# Metal Buildings and Bulk Sheds

- All buildings and sheds are designed to suit your specific storage requirements and site
- Bulk storage systems are ideal for staging product and orders
- All of our bulk systems offer great protection from the elements
- All systems are tailored to your design specifications



**Bulk Shed with Column Protectors**



**Bulk T-Shade with End wall**



**3-Sided Bulk Shed**



**Umbrella Shed**

## Metal Buildings

- Engineer stamped drawings for buildings and foundations are supplied nationally
- National installation crews
- Three-sided sheds, T-Sheds and Metal Buildings are idea for bulk storing building materials and keeping product protected from the elements
- Single-lane, Two-Lane and custom configurations per your specifications designed and engineered by our in-house CAD departments



**Millwork Building**



# A-Frame Vertical Storage Rack



- Stores moulding, boards, ladders, piping, gutters, etc.
- Tilt-back base design with continuous face plate for product labeling
- Different base depths available
- Made to accommodate any length run
- Single-sided and Double-sided systems available
- Adjustable product dividers allow multiple configurations

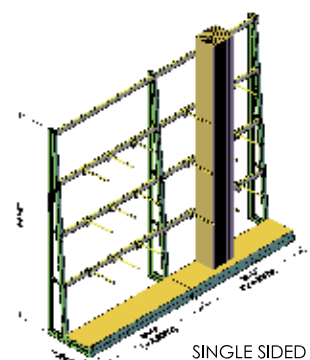
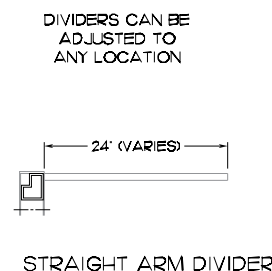
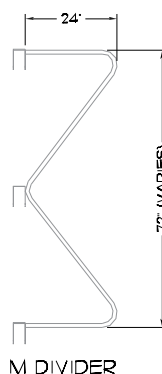
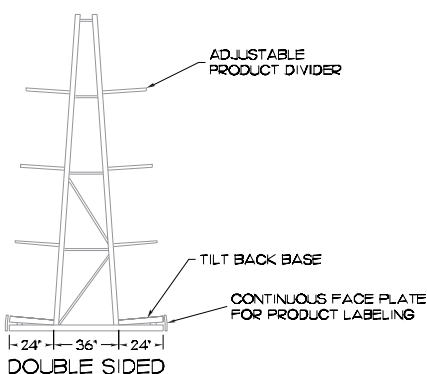
## A-Frame Systems for Trim and Moulding

### Stacking Racks

- Stacking Racks store a wide variety of products: moulding, bagged goods, doors and windows, engineered lumber products, pailed goods and more
- Utilize vertical storage space with our mobile, stackable racking system
- Stacks up to 4 units high
- Ideal for staging product and maximizing available space



## Mobile & Stackable Storage Racks





# Manual Board Bins

- Hand-load moulding, boards, pipe, metal trim, etc.
- Incorporate mezzanine storage areas above
- Catwalk for hand-picking upper levels
- Horizontal beams allow for product labeling
- Bins have 2" vertical adjustability



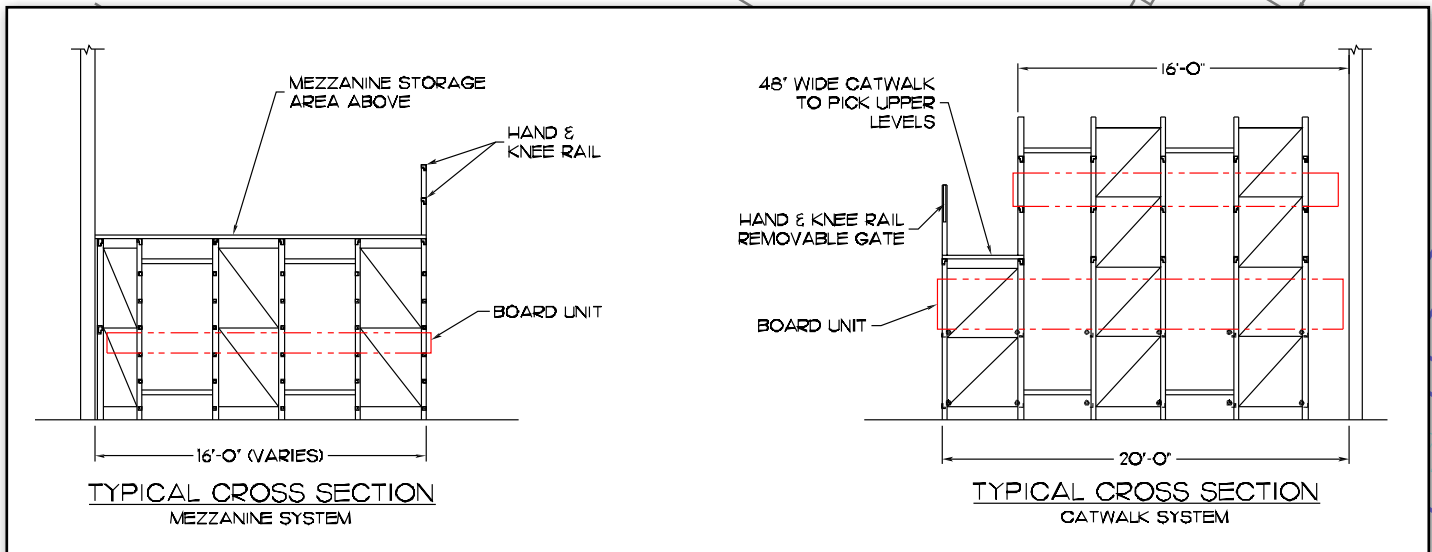
Manual Board Bins for Trim and Moulding Storage



Catwalk for picking upper levels



Mezzanine above bin storage





# Pallet Racking Systems



**4'x8', 10' and 12' Sheet Goods**

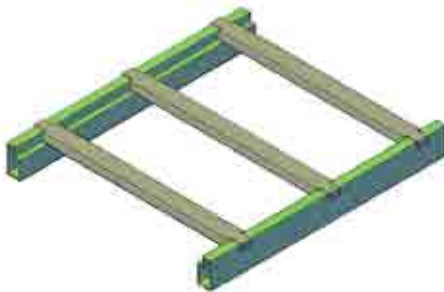
- Store pallets of roofing & shingles, bagged goods, pailed goods, 4'x8', 10' and 12' sheet goods, vinyl siding, etc.
- Heavy duty racks with multiple shelf levels that maximize your space
- Shelves have vertical adjustment in 2" increments
- Rack depth, width, and height manufactured in numerous sizes and capacities, per your need
- Racking Accessories include: Post Protectors, Coil Cradles, Back-stop Beams, Safety Netting and more



**Shingle Storage**



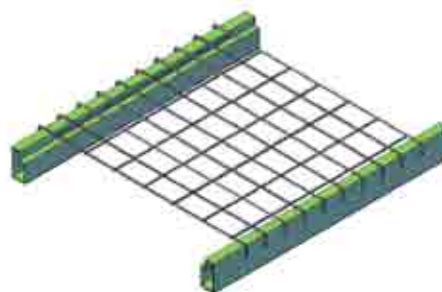
**Roofing, Bagged, and Pailed Goods**



**Pallet Support Bar**

Supports Pallet

Prevents Offset Pallets from falling between beams

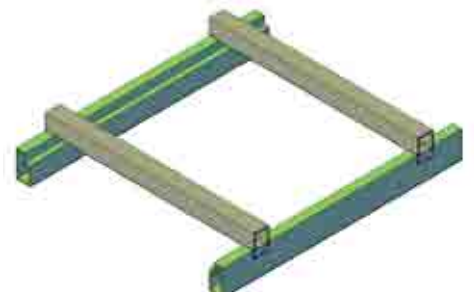


**Wire Deck**

Supports Pallet

Creates Shelf Deck

Allows Sprinkler and Light Passage



**Fork Spacer / Product Support Bar**

Supports Product

Allows for Fork Clearance to Load Rack



# Door and Window Racks

- Designed to store doors and windows vertically
- Krauter Auto-Stak's door and window rack provides an efficient method for storing and picking orders
- The rack is equipped with adjustable M-Dividers, C-Dividers, or Tube Dividers to separate items being stored



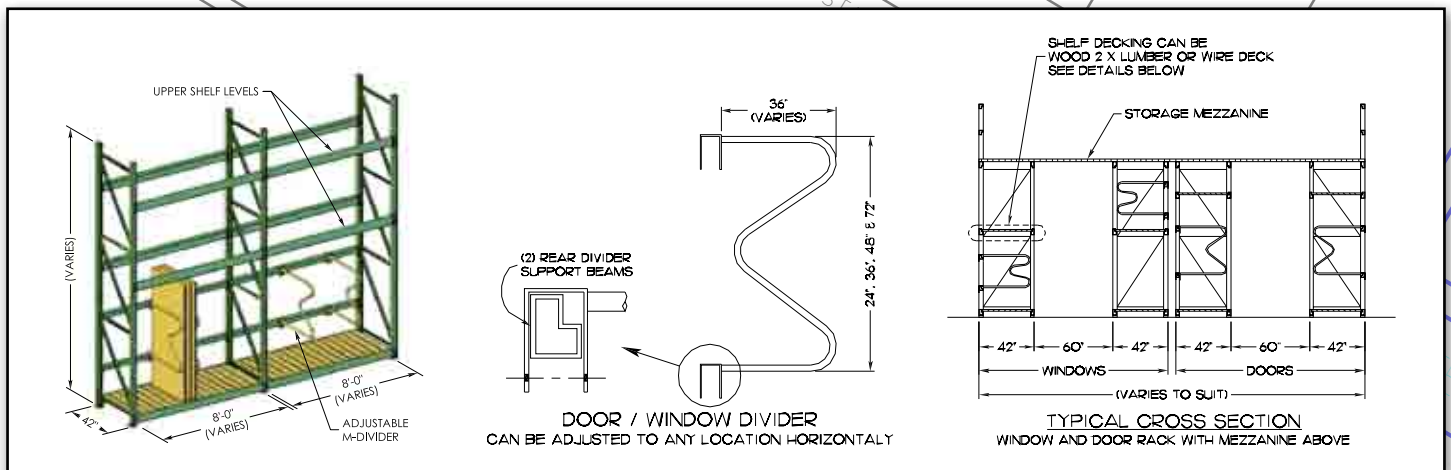
**Door and Window Rack with Integrated Mezzanine**



**Door and Window Rack with Tube Dividers**



**Door and Window Rack with Mezzanine above**

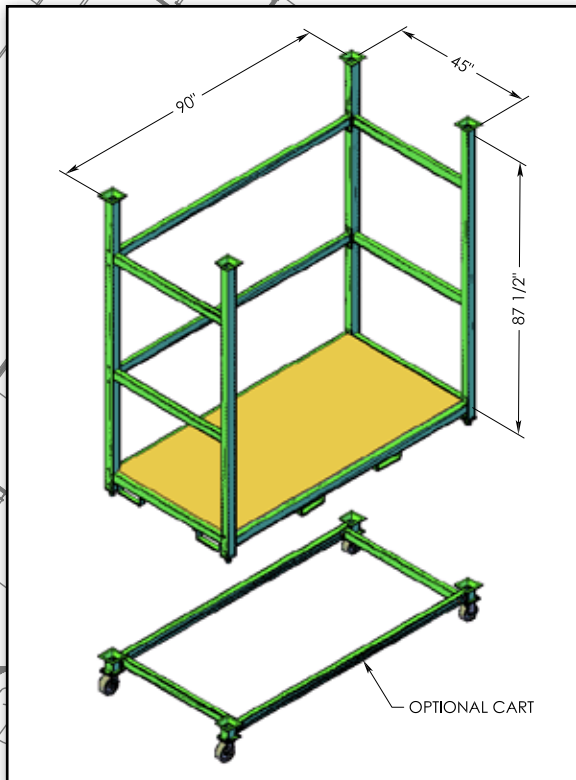




# Portable Stacking Racks



**Stack two and three levels high**



- Krauter Auto-Stak's Portable Stak Racks provide maximum storage density by eliminating the need for aisles
- Store doors, windows and other materials
- Designed to stack up to three levels high
- Ideal for staging door and window orders
- Use to ship orders on your delivery trucks
- Optional cart with casters available for ease of movement throughout warehouse
- Available in other sizes



**Staged Orders**



# Garden Centers & Mezzanines

- Open air rack-canopy system that allows you to both store and display your merchandise
- **Retrofit Projects:** Our lawn and garden centers are able to be retrofitted to nearly an existing structure
- Indoor/outdoor systems
- Canopy supported with Pallet Rack with adjustable beam levels in 2" increments
- Available in colors of your choice as well as galvanized for harsher weather regions and storing corrosive products like salt
- Custom facades and graphic designs with various roof pitch options available
- Designed, engineered and installed



65' x 45' Retrofitted Canopy

## Mezzanine Systems

- Integrated or free-standing structural systems for storage
- Lay-down board rack mezzanines for engineered wood products and lumber storage
- Can be integrated into a rack-supported shed
- Double your floor space
- Designed to suit existing building configurations
- Upper level can be configured for additional storage systems



Auto-Stak with Mezzanine for additional storage



Lay-down Board Rack Mezzanine



Structural Mezzanine



Shed with Board Rack Mezzanine



Your Storage Experts, Now Under One Roof

### **U.S. Offices**

Indianapolis, IN

Phone: (317) 542-0822

Toll Free: **800-992-2824**

Fax: (317) 542-8961

Westwood, NJ

Phone: (201) 358-9070

Toll Free: **800-992-2824**

Fax: (201) 358-8328

For more information: **[info@ks-ka.com](mailto:info@ks-ka.com)**

**[www.krauterautostak.com](http://www.krauterautostak.com)**

### **Canada Office**

Burlington, Ontario

Toll Free: (888) 318-0141

Fax: (905) 315-1776

For more information: **[info@autostak.ca](mailto:info@autostak.ca)**

**[www.autostak.com](http://www.autostak.com)**